

In a world of heterogeneous IT environments, the need for a high-performance, transparent PC X server that delivers seamless integration between the Windows® desktop and the UNIX/Linux server is critical. This world of PC/UNIX system integration demands a product be available for the newest PC architectures, utilizing the most recent standards, and is easy to use and easy to manage.

MKS™ X/Server meets these requirements. MKS X/Server is designed to be the ideal solution for interoperability of PCs and UNIX/Linux systems, and provides the usability and flexibility that users as well as enterprise system administrators require.

MKS X/Server is a full 32-bit X server that operates on the Windows Vista, Windows Server 2003, Windows XP, and Windows 2000 platforms and a native Extended Architecture 64 bit X Server on Windows Vista x64 Edition, Windows 2003 x64 Edition and Windows XP x64 Edition. MKS X/Server is available separately, or as a great companion to MKS Toolkit products.

MKS X/Server Features:

- Full X11R6.3 server
- IPV6 support
- 32 and 64 bit X Servers on the same CD image
- Zones, a powerful desktop manager for Windows which allows for easy switching among multiple single window X sessions
- Choice of Microsoft, local OSF/Motif or third party (mwm, olwm, twm) window manager
- Cut and paste between UNIX/Linux and Microsoft® Windows applications
- Support for XDMCP in Direct, Indirect and Broadcast modes
- Powerful PseudoColor emulation on TrueColor displays
- Intelligent color matching between X and Windows applications
- Support for 32-bit color
- Access X applications over the Internet using Broadway technology in X11R6.3
- VT420, WYSE 60, and ANSI terminal emulation
- Support for GLX, XIE, SHAPE, XTEST, VISION RESUME extensions
- Plane Mask support
- X11R3 bug compatibility
- Graphics Resource Cache
- X Keyboard Mapper
- X Font Compiler
- UNIX/Linux User Viewer
- UNIX/Linux Neighborhood browser
- Multi-monitor support
- Integral Wintif support
- Powerful font substitution (interactive or automatic) with font preview facility
- MIT 75dpi, 100dpi, HP, Andrew, Oriental, Hangul and Siemens fonts supplied
- Host access control
- User access control
- Graphics Optimizer -- maximizes the power of your hardware
- Net Audio support
- State-of-the-art X protocol and network diagnostic tools
- OpenGL 1.1 support (and GLX 1.2) for displaying sophisticated 3D imaging applications on a Windows PC. No additional 3D license is needed.
- Fully skinnable user interface using standard msstyles theme files.

Plug-and-Play X

MKS X/Server is true plug-and-play X, with a powerful UNIX/Linux application wizard to guide the user seamlessly through the connection process of starting X- or character-based applications.

The design philosophy behind MKS X/Server is 100% Microsoft, in step with the latest Microsoft Standards, and is designed to exploit Windows interface features (Property Sheets) and technology (Profiles), Microsoft Office 2003 style toolbars and menus, user interface skinning, enabling users to leverage existing Windows skills.

Unix Neighborhood provides a powerful, transparent natural extension to the Windows Explorer, making UNIX/Linux files as accessible as Windows files.



Beyond Connectivity

MKS has focused on integration, not simply connectivity. MKS X/Server has a number of features to harmonize the worlds of Windows and UNIX/Linux operating systems.

The world of UNIX/Linux technology becomes accessible to the Windows user through the UNIX/Linux Neighborhood browser, which has an identical interface to the Network Neighborhood. This allows drag-and-drop file transfer between UNIX/Linux and Windows systems without any additional learning requirements.

Error-Free Installation

MKS X/Server uses Windows Installer technology to ensure secure, bulletproof, compliant installs that work every time. Windows Installer technology implies the ability to do silent, administrative, and customized installations on one or all machines on your network with familiar ease.

The installer will detect and allow you to configure the Windows firewall to allow incoming X11 connections.

Minor updates and fixes are delivered in Windows Installer patch format and can be applied to admin images or delivered in an automated fashion.

The MKS X/Server installation files (and all delivered binaries) are digitally signed for your peace of mind. You always know that they came from MKS unmodified and are the genuine, virus-free packages.

MKS X/Server installation auto-senses if it is being installed on an x86 or Itanium machine (and hence installs the 32 bit X Server) or an x64 machine (and hence installs the native 64 bit X Server). No more hassles with multiple install media for different architectures. This all-in-one smart installer looks after delivering the correct binaries.

After installation, the users may choose to run the UNIX/Linux application wizard which will guide them through their first and subsequent connections to the UNIX/Linux servers. The wizard automatically detects and lists available hosts on the network and prompts the user to select one. The user then either enters the application they wish to start or browses the UNIX/Linux file system to find it. The application is then stored as a UNIX/Linux program on the Windows Start menu.

Highest Performance PC X Server

MKS X/Server automatically configures itself to deliver the highest performance possible for each PC. At installation time, it advises on how to best utilize the full power of an individual PC's hardware by having the graphics optimizer benchmark several different drawing methods and recommending the best one. The graphics resource cache provides further performance gains by eliminating unnecessary access to the server, for example there is no need to open a new brush if one is already open in the cache.

The innovative asynchronous communications feature of MKS X/Server ensures optimum use of a PC's resources by executing operations concurrently.

Internet Ready

MKS X/Server supports Broadway, The Open Group's X Window System X11R6.3. Users can launch and display X clients from a web browser across the intranet and the Internet. MKS X/Server 8.0 supports the following Broadway extensions:

- RX – This allows applications to be remotely invoked and run outside of the web browser.
- Security extension - This separates trusted applications located inside the firewall from untrusted X clients located outside the firewall. X server resources are protected because X11R6.3 security prevents untrusted applications from stealing, destroying or modifying any trusted application's data.
- LBX - Low Bandwidth eXtension. The X protocol was originally designed for a high-bandwidth connection such as a local area network environment running Ethernet at 10Mb/sec. The Internet, however, is bandwidth hungry so the LBX extension was designed for accessing X applications over a WAN or serial line including direct dial up from home to office and through an Internet server provider (ISP).
- IPV6 – This is fully implemented to ensure that you are ready for the future.



The Power of UNIX on Windows

Mixed environments can make for headaches, but diversity also does some good. Oftentimes, instead of choosing between Windows and UNIX/Linux, organizations are opting for a mix of the two operating systems. Scripting becomes more universal with the availability of MKS Toolkit products which host traditional UNIX tools on Windows. MKS Toolkit for Interoperability provides the power of the MKS Toolkit product with the new X/Server, providing full automation and scripting capabilities, remote access, remote system administration, interconnectivity and file sharing.

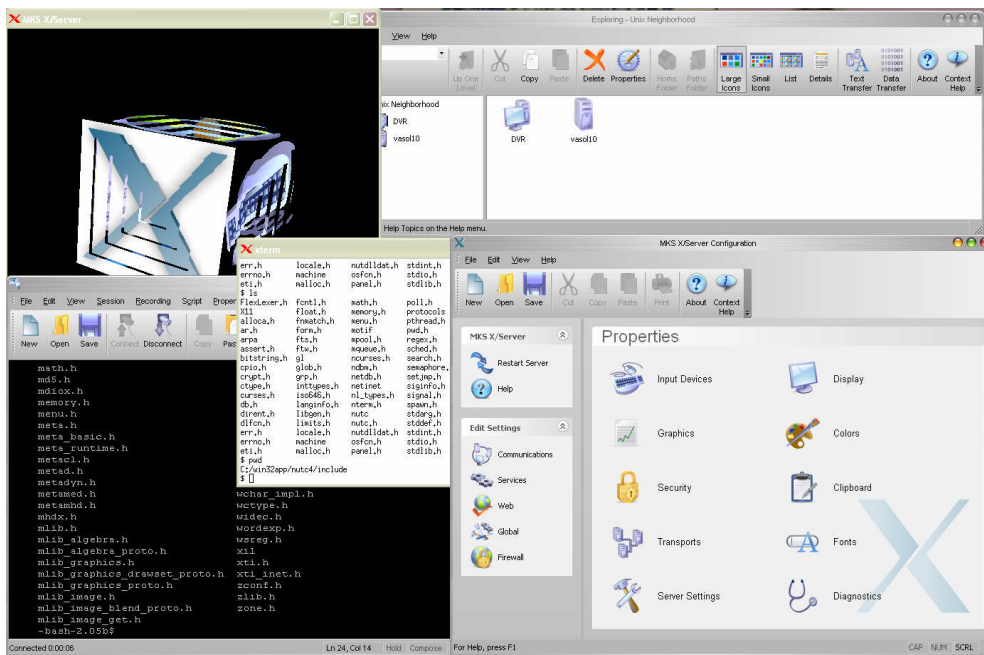
Furthermore, MKS Toolkit for Enterprise Developers allows you to port X11 applications to Windows and the MKS X/Server is available for redistribution with MKS ported applications. Such applications communicate with MKS X/Server using a fast local transport (AF_UNIX) for added performance. Of course the application can remain on UNIX/Linux and be rendered using IPV4 or IPV6 TCP connections.

Future-Proofing

MKS X/Server has been designed not only to match the future needs of corporate IT infrastructures, but also to optimize the IT infrastructures and investments of the past.

It is crucial to allow integration of legacy applications into an infrastructure while allowing the development of future strategies. MKS X/Server is consistent in its treatment of technology. Character-based legacy applications can be used in one of the terminal emulators provided (VT420 and subsets, WYSE 60 and subsets, and SCO ANSI). For backwards X compatibility, MKS X/Server offers X11R3 bug compatibility.

MKS X/Server's user interface makes it easy to accomplish all your UNIX/Windows integration tasks



At a Glance

The next generation PC X Server, MKS X/Server includes the following X-Windows porting and integration features:

- Cut and paste between UNIX/Linux and Windows applications
- 32-bit color with color matching
- Zones desktop manger
- X keyboard mapper
- Multimonitor support
- Wintif support
- OpenGL 1.1 and GLX 1.2 support

Standards

- Full X11R6.3 compliance
- Native Windows (32 bit and 64 bit) client
- Winsock 1.1 compatible
 - IPV4
 - IPV6
 - AF_UNIX support with MKS NuTCRACKER Platform

System requirements

- **Windows compatible x86 PC**
 - Windows Vista
 - Windows 2003 Server
 - Windows XP
 - or Windows 2000
- **Windows compatible x64 PC**
 - Windows Vista x64 Edition
 - Windows 2003 Server x64 Edition
 - Windows XP x64 Edition
 - Windows 2003 Server Itanium Edition is supported with the 32 bit X Server.
 - Typical installation requires 40 Mb of disk space

Worldwide Offices

12701 Fair Lakes Circle
Suite 350
Fairfax, VA
22033 USA
tel: 703 803 3343
fax: 703 803 3344
sales: 800 637 8034

Martinstraße 42-44
73728 Esslingen
Deutschland
Germany
tel: +49 711 351775 7522
fax: +49 711 351775 7555

Third Floor, Duke's Court
Duke Street, Woking
Surrey GU21 5BH
United Kingdom
tel: +44 (0) 1483 733923
fax: +44 (0) 1483 733901
sales: +44 1483 733919

